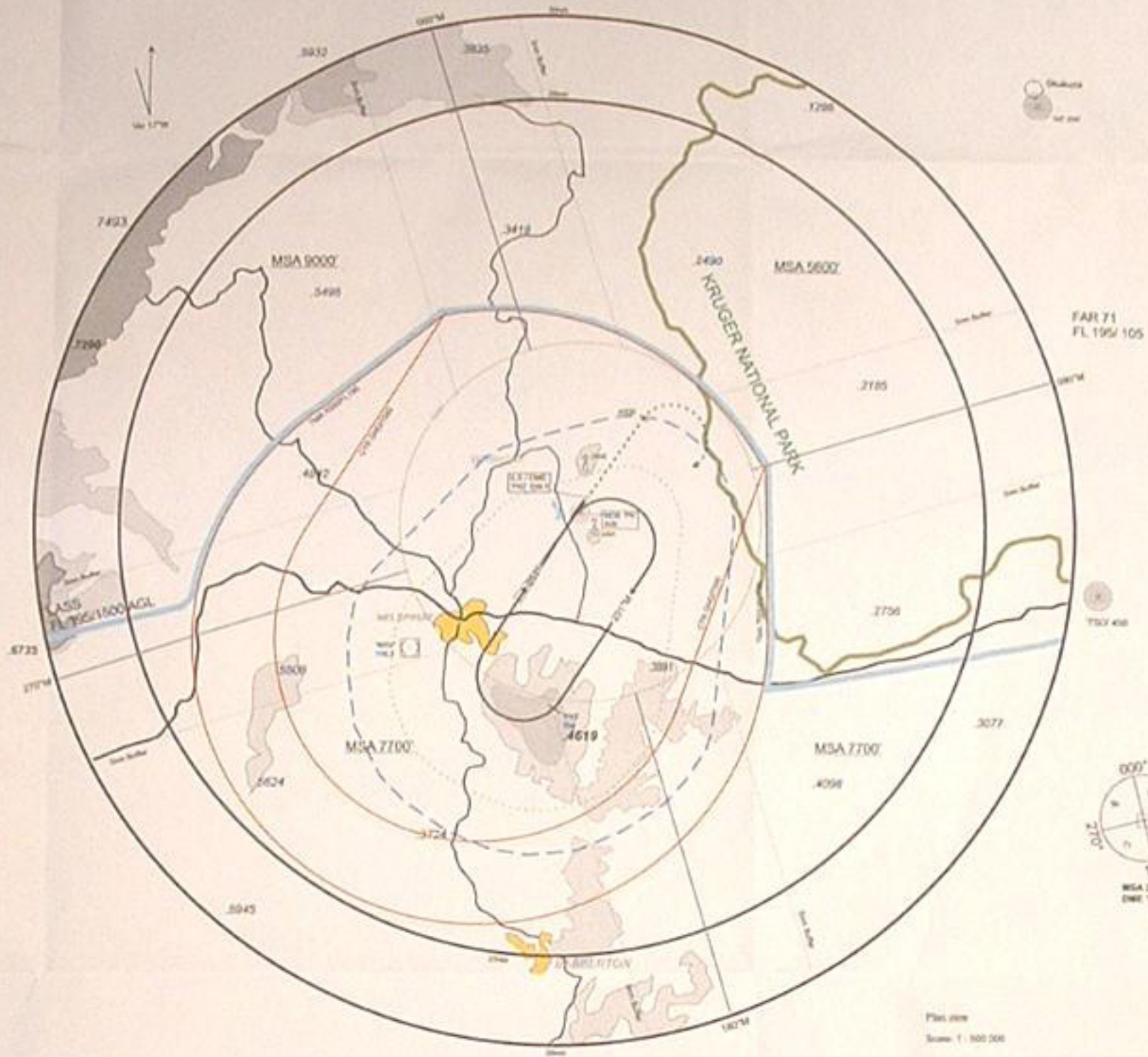
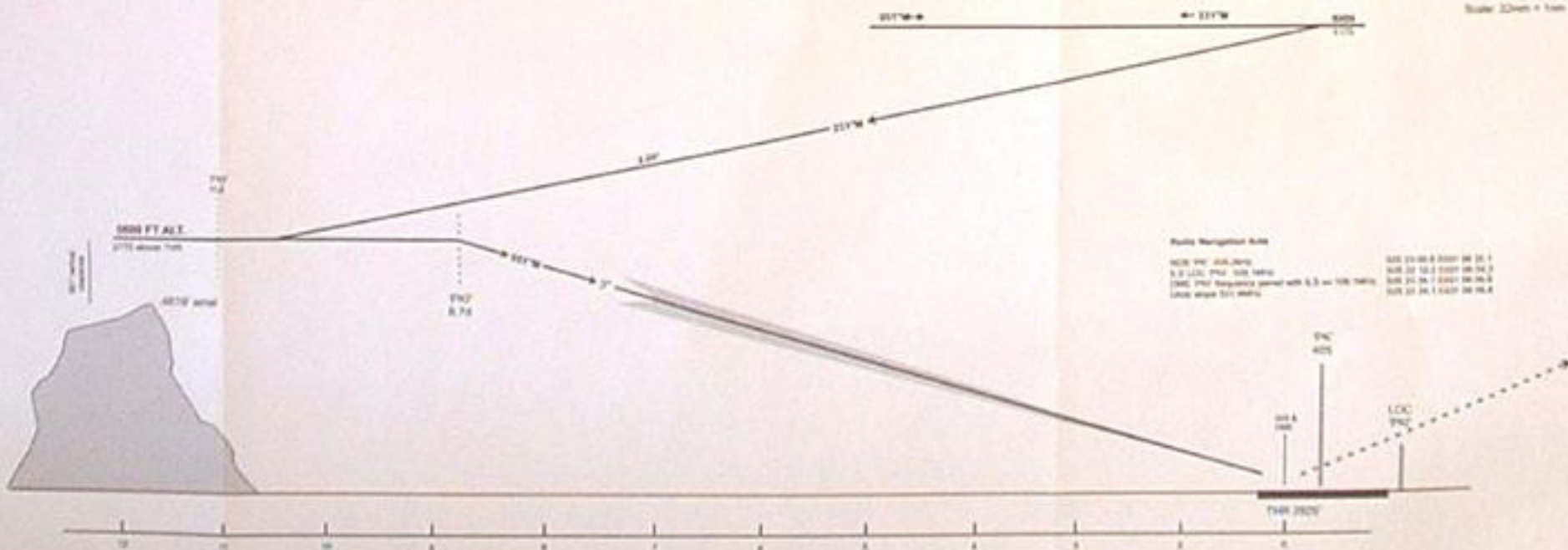


Kruger Mpumalanga International (FAKN)

NDB / DME / ILS RWY 05 (AIP Chart KN-4)



Plot size
Scale: 1:500,000



Radio Navigation Aids

NDB 790 - 465.200	500 21 20.0 0000 00 20.1
NDB 790 - 465.200	500 21 20.0 0000 00 20.2
NDB 790 - 465.200	500 21 20.0 0000 00 20.3
NDB 790 - 465.200	500 21 20.0 0000 00 20.4
NDB 790 - 465.200	500 21 20.0 0000 00 20.5
NDB 790 - 465.200	500 21 20.0 0000 00 20.6
NDB 790 - 465.200	500 21 20.0 0000 00 20.7
NDB 790 - 465.200	500 21 20.0 0000 00 20.8
NDB 790 - 465.200	500 21 20.0 0000 00 20.9
NDB 790 - 465.200	500 21 20.0 0000 00 21.0

Aerodrome ELEV & heights	RWY	Facility	Initial Approach ALT FT	Procedure	Missed APCN Procedure
KRUGER MPUMALANGA Int (FAK)	08	L.SOME "94"	5000 or MSA whichever is the higher	Procedure: NDB/OMBSLS	If no other instructions specified, track runway centre line to 4500 FT ALT. At 4500 FT ALT commence climbing turn right to NDB "94", climbing to 5000 FT ALT.
AD ELEV 2625 TWR ELEV 2625		NDB "94"	MSA 2500 OMS "94"	HOLD: Hold in a right hand rectangular pattern over NDB "94", inbound on heading 051°M, outbound on heading 231°M	If an obstruction exists to MSA or above)
Obst. Pub. ALT of 8.24 OMBS 940 - 5000		OMBS "94"	4000 000°M - 5000 060° 270°M - 7700 270° 300°M - 5000	Approach: Descent from NDB "94" inbound in the field on heading 231°M. Descend for max. 114 "94" to 5000 FT ALT. At 514 "94" turn right inbound 051°M and intercept the LOC "94". Descend on the Glide slope to OCA.	Notes: 1. Circle to land at the discretion of the pilot in command. 2. WGS 84
GCM Above TWR CAT AAB - 200 CAT C&D - 210		OMBS "94"	MSA ATC approved within a circle of 100 "94" - 3000		
Transition ALT - 5000 Transition LV - ATC		OMBS antenna co-located with Glide Slope	MAX 21000AS in the field		
WGS 84		Glide Slope			

AviationDirect cc
P O Box 1635
Fourways 2055
Tel./fax. (011) 465 2669
or 465 5291
e-mail: info@aviationdirect.co.za

